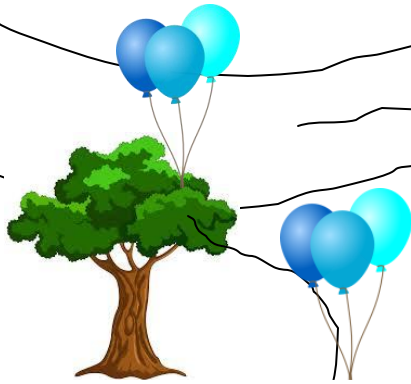


OUR AMERICAN RIVER FLOAT JUNE 4TH, 2016 | MEET UP IS AT 11:00AM



EXIT POINT - LOOK FOR THE TURQUOISE BALLOONS

Directions if you want to park your car at the END of the float. (bring Chairs & Towels if you plan to hang out)

Take Highway 50 to the **POWER INN/HOWE AVENUE EXIT- NORTH**. Then take the La Riviera Drive Exit. Follow the American River Access signs and go straight through the light into park. Please offer rides to anyone in our group who is wearing a Turquoise wrist band.



Directions

The water in the American River is *cold*. The flow is somewhat strong where we launch, but the river grows wider and flow decreases substantially. All kids need to wear a **LIFE JACKET**. Legally, alcohol is not allowed on the river.

Bring your super soakers and water shoes. Sunscreen, hats, towels, and a folding chair. It might be easier to park your car at the end of our float and carpool up to Watt. You can use La Riviera Drive between locations. It's exactly 1.5 miles between the entrance points.

LOOK FOR THE TURQUOISE BALLOONS FOR OUR EXIT POINT ON THE RIVER. Do not drift passed the Howe Bridge!

Hotdogs, chips, and waters will be served. :)

LAUNCH POINT: From Highway 50 - Take the **WATT AVE EXIT - NORTH** Then stay in the right lane to exit on La Riviera Drive. Follow the American River Access signs. Turn **LEFT** at the light onto La Riviera Drive. Turn **RIGHT** into the Watt Avenue Access Point. Parking is \$5.00 . Pay at Machine and then meet us under the bridge. We are meeting along the shore. Look for the group with Turquoise wrist bands. Hotdogs will be served. Text (916) 835-7487 w/questions.



MEET UNDER THE WATT BRIDGE AT 11AM.

BRING YOUR BLOWERS!

WE ARE LAUNCHING AS A GROUP AT NOON!

WATT AVE ACCESS POINT



MEET HERE at 11AM

HIGHWAY 50